

The **dynamics** of water



dpv  
vertical pumps

made in holland



# the power of innovation

**The art of transporting water is finding the right solution, with maximum efficiency, for each situation. The DPV series of vertical, multi-stage, centrifugal pumps has been created as a result of 55 years' of experience and, therefore, offers a broad and solid base for numerous applications.**

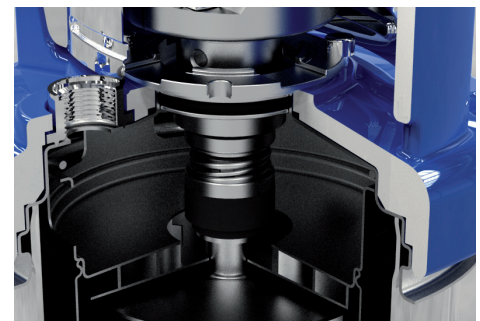
At DP-Pumps we design and produce all DPV pumps in-house. Together with feedback from our customers and service department, this ensures constant innovation in the pump series. The most recent innovations have been exemplary in the market and, as a Dutch company, we are very proud of this achievement.

The new DPV pump series is revolutionary in terms of energy-savings and efficiency. Corrosion-free materials, advanced production methods and an optimised hydraulic assembly all contribute towards providing a unique example of craftsmanship. The modular construction of the product enables you to modify the pump according to your specifications and contributes towards the provision of reliable drinking and processing water in the most sustainable way.

## **Private label**

Our aim is to support companies all over the world with knowledge and high quality products. Both products and support can be adjusted to your company. Our range of DPV-pumps is available with DP-label or private labeled.

The private labeled pumps are equipped with a private label type shield.



conscious



# choice

**It is important to be responsible when it comes to man and the environment, we translate these values into important product characteristics.**

## **Highest possible efficiency: Energy savings**

- Unique hydraulic design: high pressure per impeller at high efficiency
- Efficiency up to 79%
- Standard high efficiency motor IE2
- Optimum flow fully attuned to standard pipe diameters
- Optimum coherence between models

## **Low NPSH**

- Extended life span as a result of favourable suction conditions
- NPSH-level 0.6 up to 4.6 (m)

## **Modular construction**

- Wide range of options
- All specials are standard
- Short delivery times

## **Durable solution**

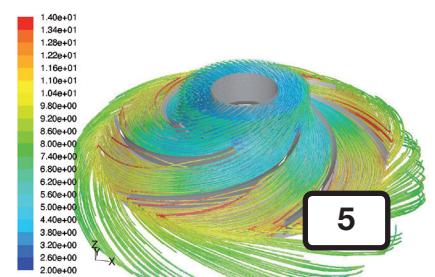
- High quality materials
- 100% adjustable to application; long life span
- Sustainable production process; modern welding and production techniques
- Production monitoring; ISO 9001 certified

## **Ecodesign**

- High score within ErP guideline
- Sustainable material
- 100% recyclable
- Minimal waste production process
- ISO 14001 certified

## **Noise reduction**

- Negligible noise as a result of optimisation of pump's flow profile and special design of motor cooling fan



# technical features

## Maintenance-free electric motor

- Extensive choice of voltages and frequencies
- IP55
- Insulation class F
- Motor efficiency IE2
- Temperature safeguard,  $\geq 3$  kW PTC
- Can be equipped with a variety of motor types, -brands, or -options

## Shaft seal

- Extensive choice of elastomers and shaft seals
- Exchangable without disassembling the pump
- Fixed, Easy Access, Cartridge

## Versatile pump casing

- Cast material
- Easy to connect
- VC-design with rigid flanges
- V and VS design with collar flanges
- E-design with built-in non return valve
- Draining without residue



## Smart plugs

- For filling, draining, de-aerating and measuring
- Separate measuring suction and discharge pressure ( $\Delta p$ )
- Stainless steel AISI 304 or 316
- By-pass possible
- Durable sealing

## Hydraulic assembly

- Highest efficiency in the market
- High quality stainless steel AISI 304 or 316

## Solid construction shroud

- Stainless steel, robust housing
- Standard pressure durability PN 40
- Low vibration and noise

## Solid base plate

- Powder coated 100  $\mu$ m
- Stainless steel optional

# applications

The combination of durable and innovative construction methods make a wide range of options and designs. The DPV series is suitable for many applications. The stainless steel base guarantees the conservation of water quality in every situation. The pump is suitable for many applications, including:

- Domestic water supply
- Utility
- Cooling water transport
- Hot water applications
- Fire fighting
- Food, chemical and process industry
- Irrigation

## Upgrade and certificates

Our pumps are of the utmost quality and are finished to the highest standards but some applications demand an even more exclusive design. A DPV can, therefore, also be provided with:

- Electrolytic polished pump casing  
and/or pickled and passivated hydraulic assembly
- Various certified sealings
- Purchase and test certificate
- ATEX motors EEXe II T3, EEXd IIC T4

Our pumps can be equipped with special seals and pressure classes. The following certificates and/or approvals are available:



modular

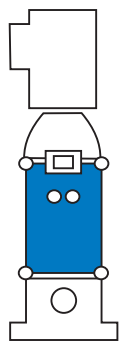




# design

## combining modules

The DPV is a modular-built pump series. As a result of the extended range of possibilities, the pumps can easily be tailor made to the application. Resulting in a longer life span and energy savings. A quick overview of the modules will inform you about the possibilities.



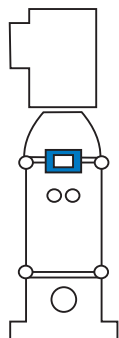
### **BH Basic Hydraulic**

- Select the hydraulic specifications and the number of stages



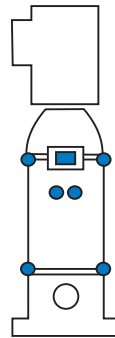
### **CB Connection/Base**

- Select the pump connection and the base plate material



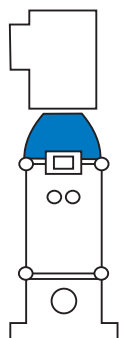
### **SC Seal Construction**

- Select the type of shaft seal



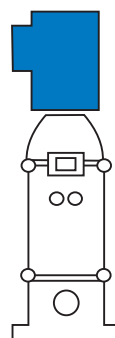
### **SE Sealing**

- Select the elastomer specifications



### **DR Drive**

- Select the type of thrust bearing housing



### **MT Motor**

- Select the motor specifications

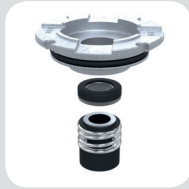
# everything



## Motor

Durable Motor configurations

- Standard DP motor
- DP block-motor
- Siemens motor
- VEM motor
- Explosion proof Eexe II and Eexd II C  
Acc. II 2 G c T3-T4
- Marine motor



## Shaft seals

3 reliable options for a wide range of media

- Fixed seal
- Easy access seal
- Cartridge seal

11 different seals to suit a wide range of applications



## Hydraulic assembly

Durable and reliable stainless steel

- AISI 304
- AISI 316

# is standard



VE



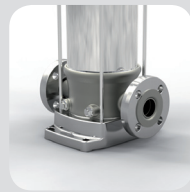
V



VS



VF



VS F



VC F



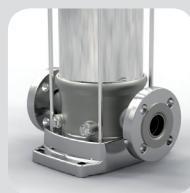
V(S) V



V(S) T

## Connections

- Pressure class PN 16, 25, 40
- Option of stainless steel AISI 304 or 316
- Connections: external thread with built-in non return valve, counter flange, victaulic, triclamp, round flange
- DIN, JIS, ASME



## Base plate

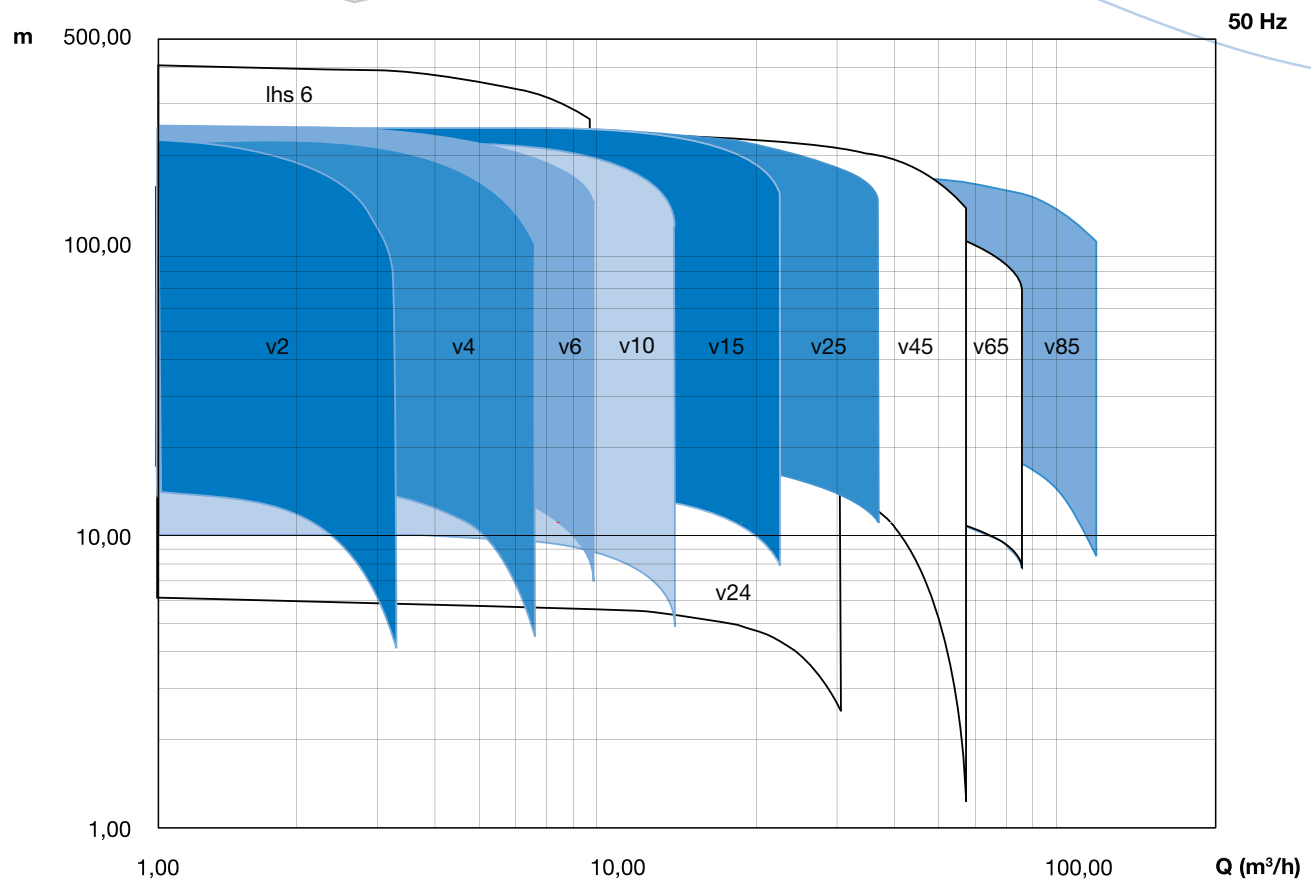
- Powder coated cast iron (standard)
- Stainless steel (optional)

# data 50Hz

Data 50Hz					
Model	DPV 2	DPV 4	DPV 6	DPV 10 2P	DPV 10 4P
<b>Capacity</b>					
Capacity range [m <sup>3</sup> /h]	0.2 - 3.3	0.4 - 6.5	0.6 - 9	1.0 - 13.2	0.5 - 6.6
Nominal capacity at Q <sub>opt.</sub> [m <sup>3</sup> /h]	1.9	4	6.3	10	5
<b>Pressure</b>					
Norm pressure	PN16-25-40				
Maximum pump pressure [m]	229	234	256	239	58
Maximum pressure at Q <sub>opt.</sub> [m]	187	193	200	179	43
NPSH at Q <sub>opt.</sub> [m]	2.2	1.2	1.2	1.2	0.9
<b>Hydraulic assembly</b>					
Temperature range medium	-20 up to +140° C				
Maximum efficiency	54%	62%	68%	68%	68%

Data 50Hz					
Model	DPV 15 2P	DPV 15 4P	DPV 25 2P	DPV 25 4P	DPV 85
<b>Capacity</b>					
Capacity range [m <sup>3</sup> /h]	1.8 - 22.5	0.98 - 11.3	2.8 - 35	1.4 - 17.5	8.5 - 112.8
Nominal capacity at Q <sub>opt.</sub> [m <sup>3</sup> /h]	18	9.8	28	14	85.7
<b>Pressure</b>					
Norm pressure	PN16-25-40		PN 25-40		PN16-25-40
Maximum pump pressure [m]	248	59	246	59	176
Maximum pressure at Q <sub>opt.</sub> [m]	193	44	185	45	132
NPSH at Q <sub>opt.</sub> [m]	1.2	0.6	3.0	0.8	2.2
<b>Hydraulic assembly</b>					
Temperature range medium	-20 up to +140° C				
Maximum efficiency	71%	71%	77%	77%	79%

# working range

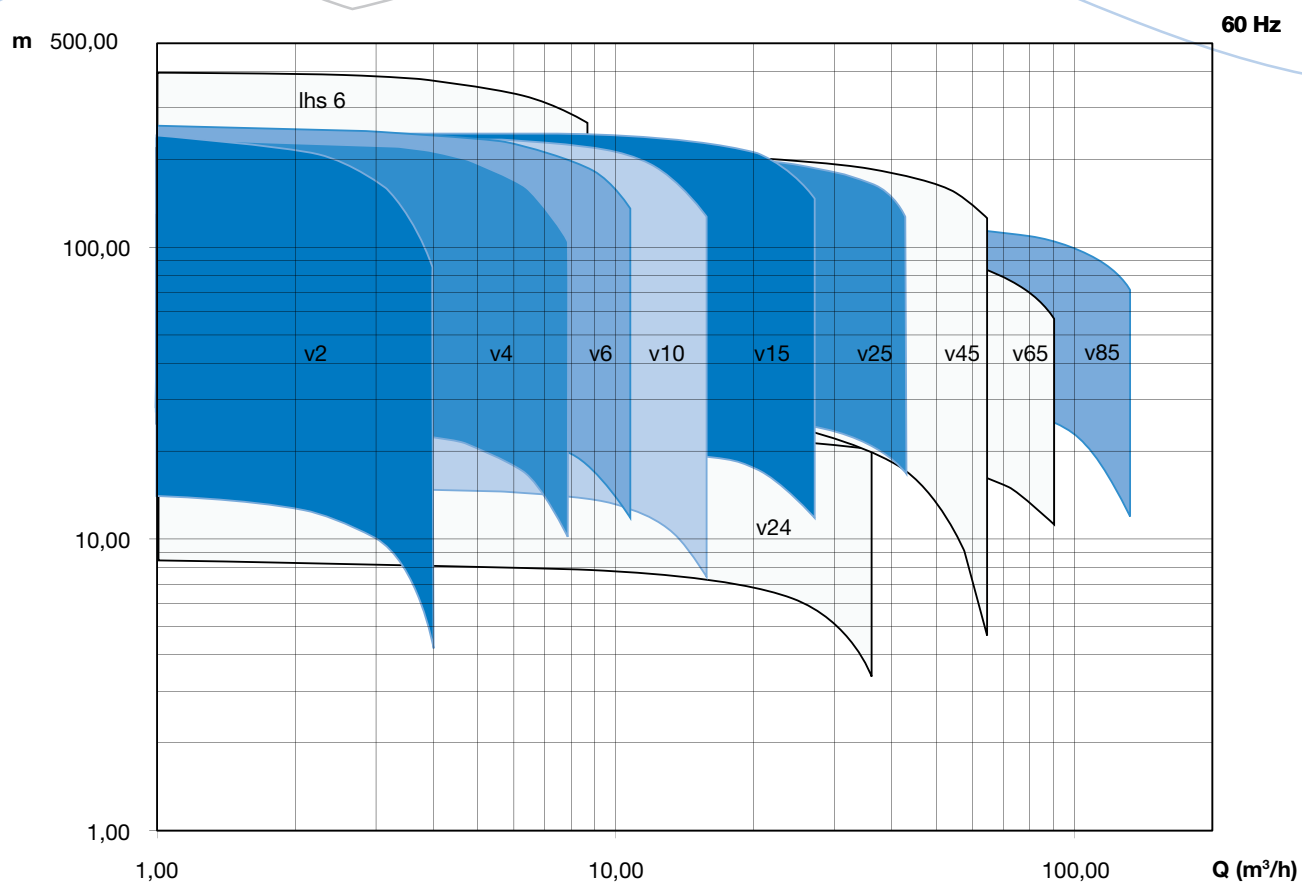


# data 60Hz

Data 60Hz					
Model	DPV 2	DPV 4	DPV 6	DPV 10 2P	DPV 10 4P
<b>Capacity</b>					
Capacity range [m <sup>3</sup> /h]	0.24 - 4	0.48 - 7.8	0.72 - 10.8	1.3 - 15.8	0.6 - 7.9
Nominal capacity at Q <sub>opt.</sub> [m <sup>3</sup> /h]	2.3	4.8	7.6	13.3	6.3
<b>Pressure</b>					
Norm pressure	PN16-25-40				
Maximum pump pressure [m]	246	238	255	246	61
Maximum pressure at Q <sub>opt.</sub> [m]	201	195	199	173	44
NPSH at Q <sub>opt.</sub> [m]	3	1.8	2	2	1.3
<b>Hydraulic assembly</b>					
Temperature range medium	-20 up to +140° C				
Maximum efficiency	54%	64%	68%	68%	68%

Data 60Hz					
Model	DPV 15 2P	DPV 15 4P	DPV 25 2P	DPV 25 4P	DPV 85
<b>Capacity</b>					
Capacity range [m <sup>3</sup> /h]	2.2 - 27	1.1 - 13.8	3.4 - 42	1.7 - 21	10 - 132
Nominal capacity at Q <sub>opt.</sub> [m <sup>3</sup> /h]	21.7	10.9	34	17	100
<b>Pressure</b>					
Norm pressure	PN16-25-40		PN 25-40		PN16-25-40
Maximum pump pressure [m]	233	57	210	87	151
Maximum pressure at Q <sub>opt.</sub> [m]	177	43	157	65	108
NPSH at Q <sub>opt.</sub> [m]	2.5	1.3	4.6	1.1	3.8
<b>Hydraulic assembly</b>					
Temperature range medium	-20 up to +140 oC				
Maximum efficiency	71%	71%	77%	77%	79%

# working range





## dp pumps

dp pumps  
P.O. Box 28  
2400 AA Alphen aan den Rijn  
Holland

t +31 172 488 388

f +31 172 468 967

dp@dp-pumps.com  
www.dp-pumps.com

